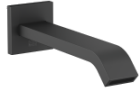


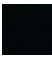
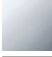
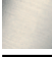
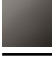


**IMO Bath spout for wall mounting - Matte Black**

IMO

13 801 670



- 200mm projection
- rectangular normal flow
- hole diameter 37 mm
- 1/2" connection
- max. flow 25.1 l/min at 3 bar flow pressure

	Matte Black	13 801 670-33
	Chrome	13 801 670-00
	Brushed Platinum	13 801 670-06
	Dark Chrome	13 801 670-19
	Brushed Light Gold	13 801 670-27
	Brushed Chrome	13 801 670-93

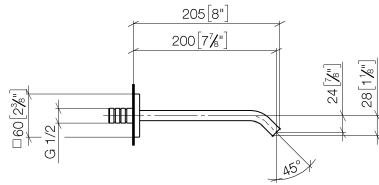
**Recommended miscellaneous**



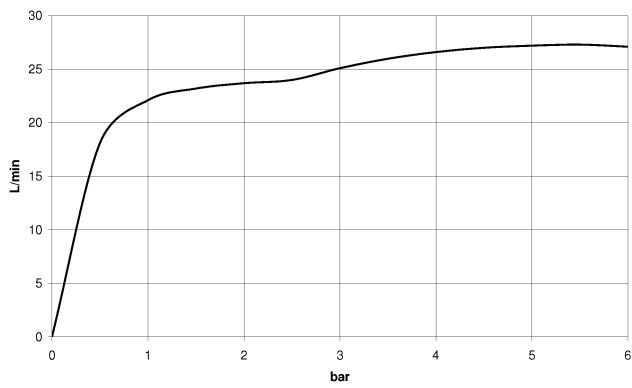
- Concealed wall elbow -** 35 085 970 90
- min. recess depth 90 mm
  - max. recess depth 163 mm

13 801 670

mm [inches]



### Flow rate chart



### Certificates

IAPMO\_4976 (6).

13 801 670

